

SERVICE



LETTER

Service Letter No. 368

February 7, 1962

TO: Distributors, Dealers, Certified Service Centers and Owners

SUBJECT: Lycoming Service Instruction No. 1049 dated December 29, 1961

MODELS AFFECTED: PA-23 and PA-23 "160" Apaches, PA-24 "250" Comanches -- incorporating Lycoming O-320, O-360 and O-540 series aircraft engines

The purpose of this Service Letter is to advise that when complying with Lycoming Service Instruction No. 1049, dated December 29, 1961, copy of which is attached, the installation will require fittings of a different type than those used with the present pump.

These new fittings may be obtained by submitting your order to the Service Spares Department of Piper Aircraft Corporation. The part numbers are listed below under the column indicating the aircraft application:

<u>PART NUMBER</u>	<u>CODE</u>	<u>AMOUNT</u>	<u>NOMENCLATURE</u>
<u>PA-23 AND PA-23 "160" APACHE</u>			
17766-70	R	2	HOSE ASSEMBLY - Flexible (cross-feed fuel at fuel pump outlet)
19988-00	R	2	LINE ASSEMBLY - Engine fuel pump outlet
453 616	*	2	BUSHING - (AN912-1D) Engine fuel pump outlet
458 897	*	2	ELBOW - (AN822-5-4D) Engine fuel pump inlet
<u>PA-24 COMANCHE</u>			
458 919	*	1	ELBOW - (AN914-2D) Fuel pump outlet
453 616	*	1	BUSHING - (AN912-1D) Fuel pump outlet
23318-00	R	1	LINE ASSEMBLY - Fuel (to carburetor)

(Over)

PIPER AIRCRAFT CORPORATION, LOCK HAVEN, PA., U. S. A.

February 7, 1962

<u>PART NUMBER</u>	<u>CODE</u>	<u>NUMBER</u>	<u>NOMENCLATURE</u>
<u>PA-24 "250" COMANCHE</u>			
23317-00	R	1	LINE ASSEMBLY - Fuel (to carburetor)
476 662	*	1	NIPPLE - (AN816-6D) Engine fuel pump outlet
23107-00	R	1	BAFFLE ASSEMBLY - Fuel pump
22502-21	R	1	TUBE - Flexible (Fuel pump air blast)

R - Replace

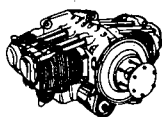
* - Add new part

The subject Service Letter does not apply to the PA-23-250 Aztec aircraft.

Very truly yours,

PIPER AIRCRAFT CORPORATION

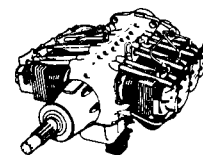
WH:dlt
Enclosure
Wes Holmes
Service Manager



LYCOMING

Service

Instruction



LYCOMING DIVISION - WILLIAMSPORT, PA., U.S.A.

DATE: December 29, 1961 Service Instruction No. 1049
Approved by FAA

SUBJECT: Lightweight Diaphragm Fuel Pump for Direct Drive Engines

MODELS AFFECTED: Lycoming O-235 Series, O-290 Series, O-320 Series, O-340 Series, O-360 Series and O-540 Series Aircraft Engines

TIME OF COMPLIANCE: At Owner's Discretion or Anytime Fuel Pump Must Be Replaced

A redesigned diaphragm type fuel pump (Lycoming P/N 74060) is now being incorporated on all production engines of the above listed models. This new pump is both smaller and lighter in weight than the pumps it replaces. The attaching capscrews are shorter and will not have a tendency to become loose causing oil leaks. To install redesigned pump, order parts listed below under "Parts Required".

Since the new pump is smaller, it may be necessary for owners and operators to either replace or rework the fuel inlet line to the pump and fuel outlet line from the pump to the carburetor. This will depend on the type of installation, solid or flexible lines, etc. On Page 2 is an outline of the new and older style pumps which shows the difference in pump sizes. When installing the pump, tighten the two 3/8" capscrews to 250 inch pounds.

PARTS REQUIRED:	Lycoming P/N	Nomenclature	No. Required
	74060	Fuel Pump	1
	STD. 949	Reducer Bushing (When Required)	2
	60096	Gasket	1
	STD. 1882	Capscrews	2
	STD. 33	Washers	2
		No. 32 Safety Wire	AR
		Fuel Inlet Fitting (Transfer from old pump)	

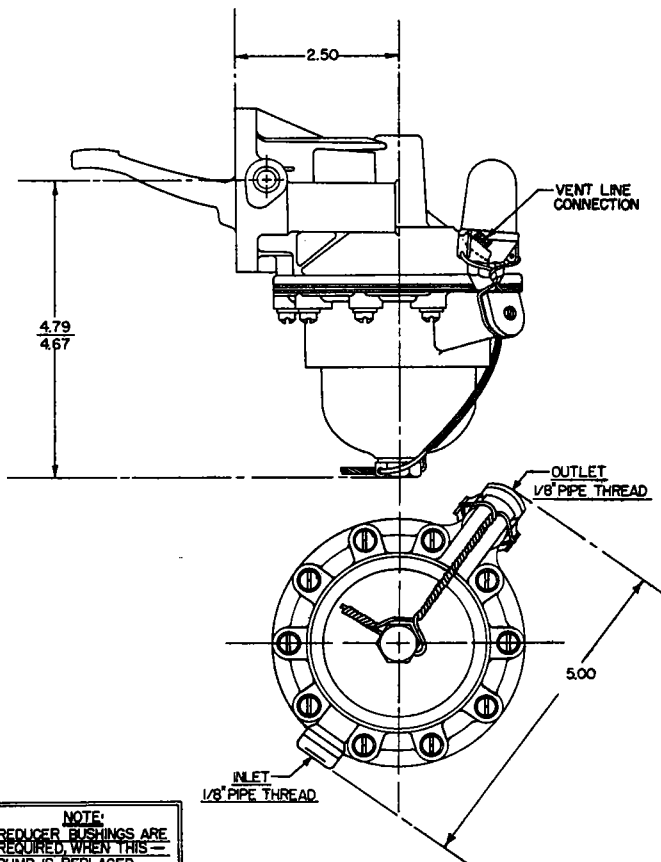
OBSOLETE PARTS:	Lycoming P/N	Nomenclature
	STD. 1807	Capscrew
	69497	Fuel Pump Assembly
	69506	Fuel Pump Assembly
	70444	Fuel Pump Assembly
	71537	Fuel Pump Assembly
	71660	Fuel Pump Assembly
	62628	Fuel Pump
	71661	Fuel Pump

NOTE: Obsolete fuel pump assemblies no longer available after present stock is exhausted.

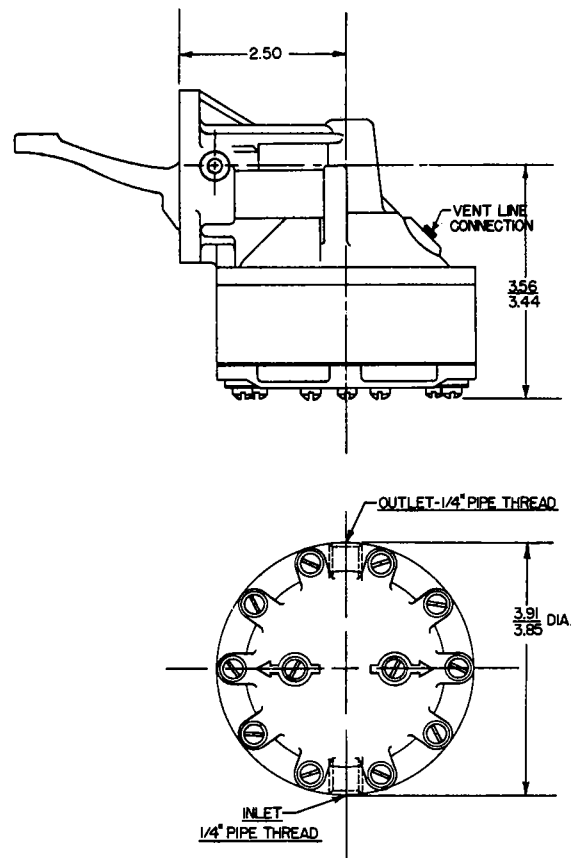
SPECIAL TOOLS REQUIRED: None

WEIGHT CHANGE: Four Cylinder Engines - Minus 1.78 lbs.
Six Cylinder Engines - Minus 2.43 lbs.

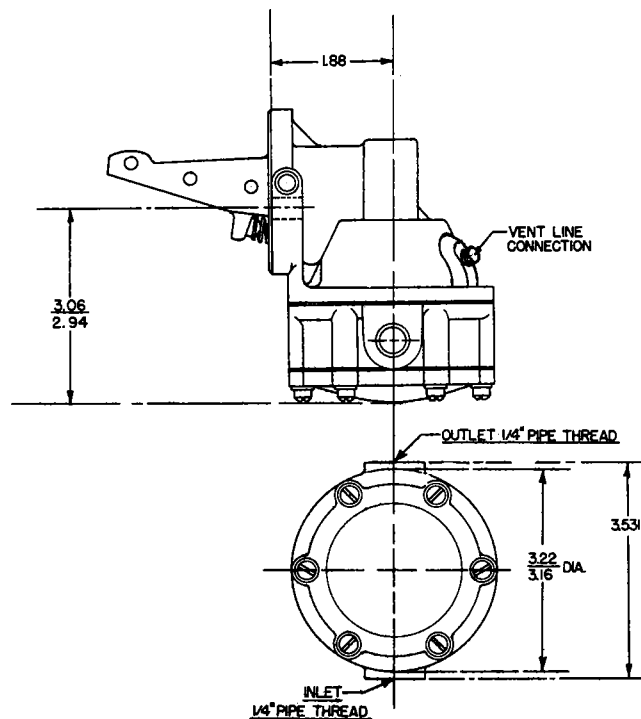
9794 - This number for Lycoming reference only.



Four Cylinder Pump



Six Cylinder Pump



New Lightweight Pump Replaces Either Pump Shown Above